

Please Read  
This  
Manual First!  
This  
MAP GIS Elite  
has been updated!  
NOT USED with  
External GPS!



## Montana AG Plastics

P.O. Box 20782

Billings, MT 59104

Phone: (406) 351-1124

Email [map@montanaagplastics.com](mailto:map@montanaagplastics.com)

Montana Ag Plastics is a division of  
Reds Fixit Shop LLC



The Dataloggers were developed because of a need for a low cost and accurate GPS data collection. This system was developed with different components so it can fit any spray system and any budget.

### Why All Topo

The MAP Dataloggers were developed to simply get accurate and complete GPS Data. While looking for a simple GPS system, the need for an equally simple GIS system arose. We found the I Gage, All Topo MAP system could meet this need. The map system is easy to use. Maps can be printed from any printer. Your map data can be exported to almost any other map system for easy delivery of your information to your customers. It is also, easy export to shape files. The tech support is second to none. We offer a free training video to learn how to use the map system.

## MapGis Elite



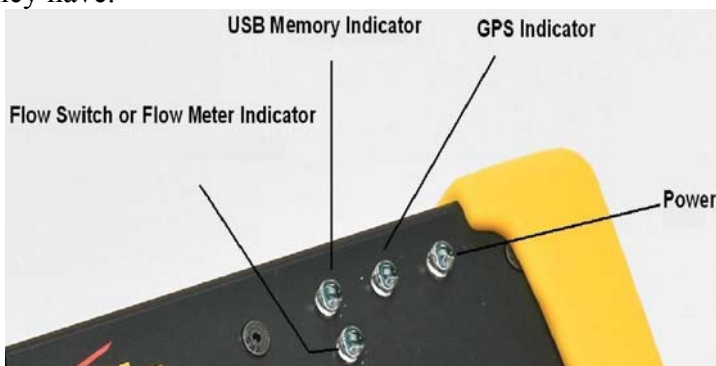
Some of the new features of the MapGis Elite are:

1. New Power Indicator light
2. New GPS Indicator Light
3. USB Indicator Light
4. Flow Switch or Flow Meter Light
5. Record Flow Rate
6. 8 Feature Buttons
7. Maps multiple weeds at one time
8. USB Memory drive, 8 GIG Max! (No download time!)
9. Internal GPS
10. Expandable memory and features for future change



When you power up the new datalogger, one of the first things you will see is the Number 1 Button light is turned on.

The button is set this way so no matter what, the datalogger will record where you are spraying. You can still turn it on and off to mark weeds, but we suggest you make it your most commonly sprayed weed. You also have to hold down the buttons for a couple of seconds to turn them on and off. This is set to avoid the oops! when you hit a bump or are on rough terrain with your ATV. You can only turn buttons on and off after the USB and GPS unit are ready to go. We recommend you turn your unit on at least 15 minutes before you are going to use it to assure it is ready to go. With most GPS units the longer you have them on the better accuracy they have.



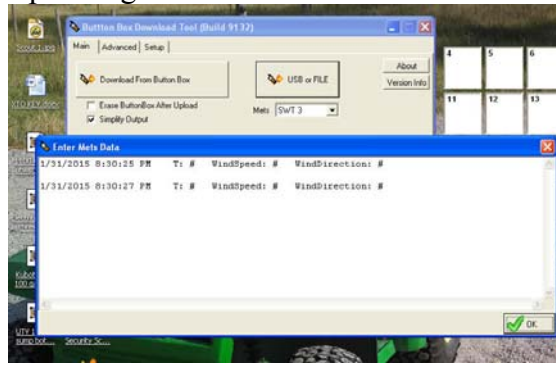
The Power LED will be a steady red light indicating the 12 volt power is on. The GPS LED will be a bright to dim blink until it has acquired satellites. After it has acquired satellites it blinks every 2 seconds. The Memory light comes on when the USB Drive is ready to receive data, and the Flow Switch/Meter Light tells you when the Flow Meter or Flow switch is working. If for some reason this light stays lit all the time, you know the flow switch is stuck in the on position and probably needs cleaned. When you turn your sprayer on you can tell you are recording data because the USB and the GPS lights will alternate flashes indicating the datalogger is recording.



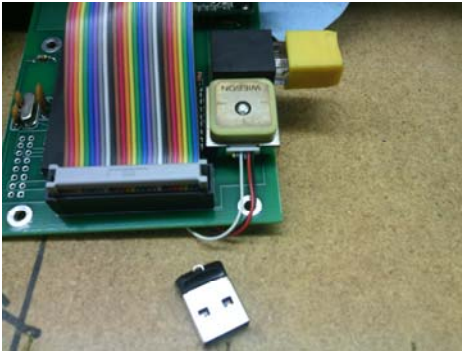
Your New Datalogger is equipped with a Time and Temp Button. When you take your wind, temperature, direction information, keep the time you record. Push the button on the side of the Datalogger until you see the USB and GPS lights flash once and now you have recorded the location of where and when you took wind speed, wind direction and air temperature.

At the time you download your data, and after you have named your buttons with the attribute editor

(Button Box Tool) a box will pop up asking for this information.



The GIS Elite is equipped with a new high sensitivity internal GPS receiver.



You know your GPS is working when the GPS LED will do a bright to dim blink until it has acquired satellites. After it has acquired satellites it blinks every 2 seconds.

## Backpack Option



The new backpack kit comes with a flow meter, fanny-battery pack, and battery charger.



First install the flow meter on your backpack. Cut the hose and place the flow meter in the sprayer hose. We recommend you place the flow meter as close to the pump as possible to avoid damage. Make sure the flow arrow on the flow meter is pointing in the correct direction. We also recommend you use the hose clamps to tighten the hose and the zip tie to protect the wire from being jerked out of the flow meter.



Plug in the flow meter and the datalogger into the fanny pack and place the datalogger in the pocket. Make sure your datalogger is working by checking the LED's. There is an audio option with a beeper if you want to here the datalogger working.



## Changing Continuous Logging Mode:

1. Hold buttons 7 and 8 while applying power.
2. Release both buttons when GPS light turns on.
3. At this point, the LED on button 2 is....ON for beeper on.....or.....OFF for beeper off
4. Hold button 8 until logger goes to normal operations. This saves your settings.

# Changing Audio Beeper to ON/Off Mode:

1. Hold buttons 7 and 8 will applying power.
2. Release both buttons when GPS light turns on.
3. At this point, the LED on button 2 is On for beeper or OFF for beeper off.
4. Hold button 8 until logger goes to normal operations. This saves your settings.

Some of the new options like the Beeper, Continuous Logging Mode, and Internal GPS may not be included in earlier models of the Elite 8 Button Dataloggers, but all models of the Elite 8 Button Dataloggers are upgradeable.



## How to Download GIS ELITE:

New Download Tool [http://alltopogps.com/bin/BBDL2\\_B9131.exe](http://alltopogps.com/bin/BBDL2_B9131.exe)

With the new Datalogger you have received a USB flash drive. On this flash drive is the new button box Download tool. This new tool will work both with the old and the new Datalogger.

Insert the flash drive into a USB port. Wait for approximately 10-15 seconds. If the folder does not open after inserting the flash drive then go to computer and removable storage.

Double click and open the folder. You will see a folder named something like **BBDL2 B90??**. Open this folder and click on the computer icon to install the new tool. A box will open which says button box download tool. Please click next. You can also download the tool at, [http://alltopogps.com/bin/BBDL2\\_B9131.exe](http://alltopogps.com/bin/BBDL2_B9131.exe)

Then the box will say destination location. Please click next. A small box will pop up installing the new tool. When this is complete, then please click finish. Your download tool is now installed.

### Downloading Dataloggers to flash drive:

Make sure the Datalogger power is on. Make sure the flash drive is inserted into the USB port on the Datalogger. The Datalogger saves your map data to the flash drive **as you spray**. **The Datalogger will not save files without a flash drive in the datalogger.**

At the end of the day remove the flash drive and take it to your computer. **You can also make a new file by turning off the datalogger power. Wait 10 seconds and turn the datalogger power back on. Also, you can unplug the Flash Drive and wait 10 seconds. Plug the Flash Drive back in to make a new file. This comes in handy when changing jobs or customers.**

Insert the USB flash drive into your computer (if the drive opens just close the window). Now open the BTN download. This should be a black GPS icon on your desktop. Click on the button that says USB or File. The tool will look for the **flash drive and the CZV file**. If you make more than one file, you will see them in the window.

Select the file that you want to read (MTAP?????.CZV). Click open the box named Unique Job Name. You can name this map file any name you want but **it is highly recommended that you use the date in your file name**. After naming the file click OK.

The session attribute editor will appear. Fill in the submitter, applicator, county, state, infected area and any comments you want to make about this map file. **(The swath width per feet and the pulses per gallon are only used with units using the flow meter feature)**. Now select button one. The Choose button box will appear. The default is the MT WEED list.

**To change this weed list**, choose the Select Button 1 button located on the right side of the tool. Go to advanced at the top of the left hand corner of the Choose button box.

Click advanced import values, and then select from the weed lists available. Then click open. Next scroll down and find the weed you would like to associate with button one. Highlight it blue by clicking on the line. Then click OK at the bottom of the box. Your selected weed will now show up behind BTN1 Blue line.

Now follow this same procedure for the next eight buttons. Once your weed list is complete it will remain that way until you change it. After naming all of the buttons click Ok. The download tool will start to convert the data on the flash drive to map files. This may take a few minutes if the files are large.

While the button box is converting the map files go to All Topo and open. When the select state box appears, select your state and then at the bottom of the box **uncheck open last project**. Select OK.

All Topo will open to a blank screen. Go down to the bottom of your computer screen and click on the BTN Box DL2 box. This will put the download button tool back on your screen. When the message at the bottom of the button box download tool says **get from thumb complete.err 0** and a box appears in the middle of the tool. That says Open (your file name) in All Topo maps your files are ready to install on All Topo.

Push the open in All Topo maps button. At the bottom of All Topo you should see All Topo adding your data to the map files. When all Topo quits counting your map files **Go to the button bar and push the button that says Wpt with Binoculars**. A window appears that says search annotation list. **You will see your data on the screen. Go down and select one of the lines and highlight it blue. Then go to the bottom of the box and select center this tells All Topo where your data is in reference to your maps. Go over and click done. You will see your spray data on the All Topo map.**

One of the big questions asked is; how do I make a .shp or ArcView-ArcGis file?

ArcView/ArcGis uses a group of files to make a map. When working with and passing your files to an entity that wants a .shp file it is made easy with this tool. First, go to my Computer-Local C drive – BTNBOXDL2- and look for the Zip file with your file name on it. In this zip file is an automatically made .shp file in WGS-84 Latitude/Longitude for your ArcView user. Please have them try this file first. We find that over 99% of the ArcView users can use these files. This will make your life easier! If you need help the first time you pass these files over to the ArcView user, PLEASE email me at [help@redsfixit.com](mailto:help@redsfixit.com)

New Download Tool [http://alltopogps.com/bin/BBDL2\\_B9131.exe](http://alltopogps.com/bin/BBDL2_B9131.exe)



### **How to clear the flash drive:**

There are a three ways to clear the flash drive. The first way is if you check the box that says Erase Button Box after Upload. The Button Box tool will make your files a backup on your flash drive but will not show when new files are added to the drive. This is a great place to have a backup.

The second way is to go to Computer and look for Removable Disk. Right click on this Icon and go to format. Follow the steps. This will erase all the files and you will not have a backup.

The third way is to go to Computer and look for Removable Disk. Right click on this Icon. Go to Open. Right click on the files and click Delete. Again this will erase all the files and you will not have a backup.

### **A couple of frequently asked questions:**

#### **When I open the map in All Topo, why do I have a lot of writing on my screen?**

**Answer:** Select the ALT button and hold it while selecting the G button. The layer grid controller will appear. At the top part of the controller, select the **All off button** and the writing will disappear.

#### **Do I leave the flash drive in the Dataloggers while spraying?**

**Answer: Yes! The Flash Drive is inserted and left in place while the Datalogger is in use:** The Flash Drive is only removed when you are ready to put your map data on your computer. You should try to use a 8GB drive or smaller with the Datalogger.

#### **Can I use the GIS Elite to manually map like I did with the old GIS V?**

**Answer: Yes! The only catch is you have to buy an optional Battery pack and cable.**

#### **When I create a .shp file the button colors do not show up. How can I transfer the colors?**

**The colors are for use in All Topo only. The information of what the button is that you pushed is sent in a ,shp file but not the button color. The user you send the files to will see what weed goes with what button. They then can choose the colors desired.**

**For other questions you can email [info@redsfixit.com](mailto:info@redsfixit.com) We try to answer any questions within 12 to 24 hours or quicker!**

# Notes!